

# Installation

---

## System requirements

Install the GFI MailSecurity 10.0 ReportPack on a computer that meets the following requirements:

- Windows 2000 (SP4) / XP (SP2) / 2003 operating system
- Internet Explorer 6 or higher
- .NET Framework version 1.1.

---

## Installation procedure

The GFI MailSecurity 10.0 ReportPack installation wizard will perform the following operations during the installation process.

- Verify that you are running the latest version of the GFI ReportCenter framework. If you are installing the framework for the first time or the currently installed framework version is outdated, the installation wizard will automatically download the latest one for you.
- Automatically install all the required components including the GFI ReportCenter framework, the GFI MailSecurity 10.0 ReportPack default reports and the Report Scheduling service.

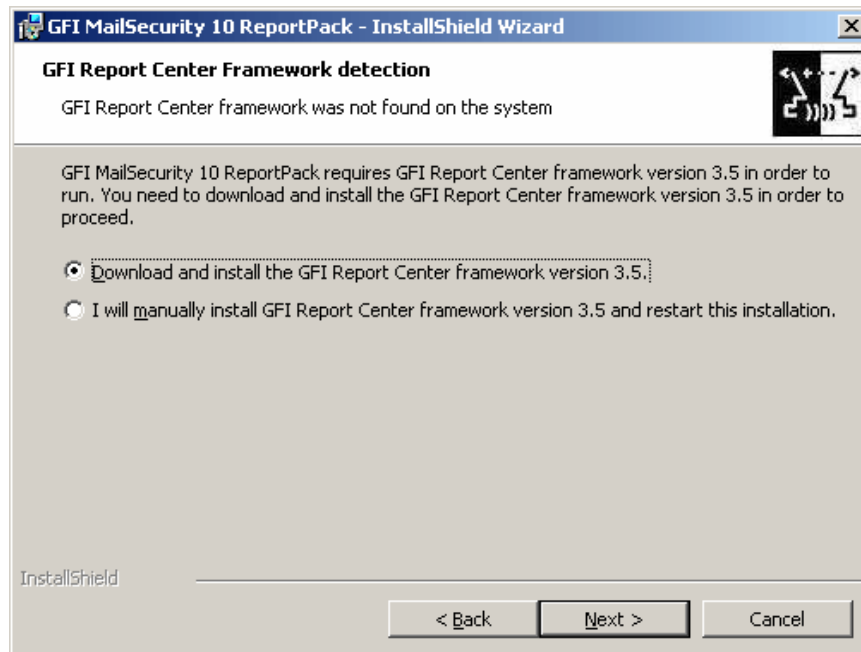
To install the GFI MailSecurity 10.0 ReportPack, follow these steps:

1. Double-click on **MSEC10ReportPack.exe**.



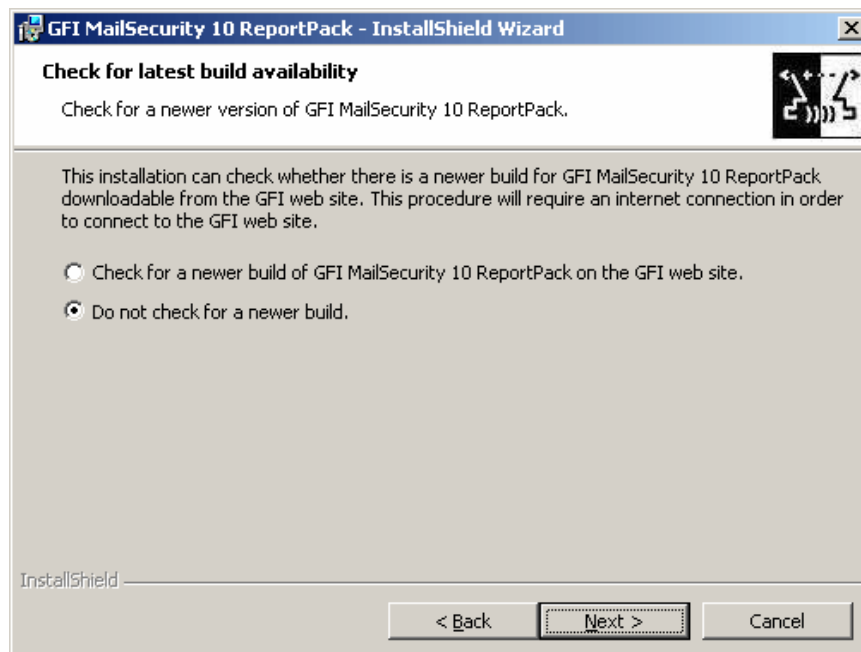
Screenshot 2 - Installation welcome page

2. In the welcome page, click **Next** to continue the installation.



Screenshot 3 - GFI ReportCenter framework detection dialog

3. If the current version of your GFI ReportCenter framework is not compatible with the GFI MailSecurity 10.0 ReportPack, you will be prompted to download and install an updated version. To download the latest version of the GFI ReportCenter automatically, leave the dialog options as default and click **Next**.

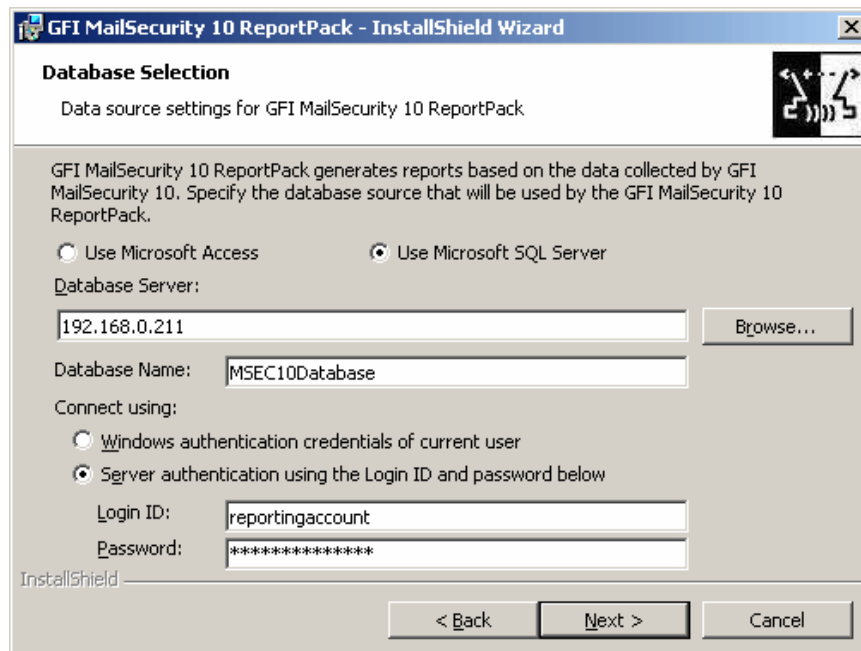


Screenshot 4 - Check for a more recent build of the GFI MailSecurity 10.0 ReportPack

4. Choose whether you want the installation wizard to search for a newer build of the GFI MailSecurity 10.0 ReportPack on the GFI website. Then, click **Next** to proceed with the installation.

5. In the license page, read the licensing agreement carefully and then click **I accept the terms in the license agreement**. Click **Next** to continue.

6. Enter your Name, Company, and License key. If you are evaluating the product, leave the license key as default (i.e. **Evaluation**). Click **Next** to continue.



Screenshot 5 – Database selection page

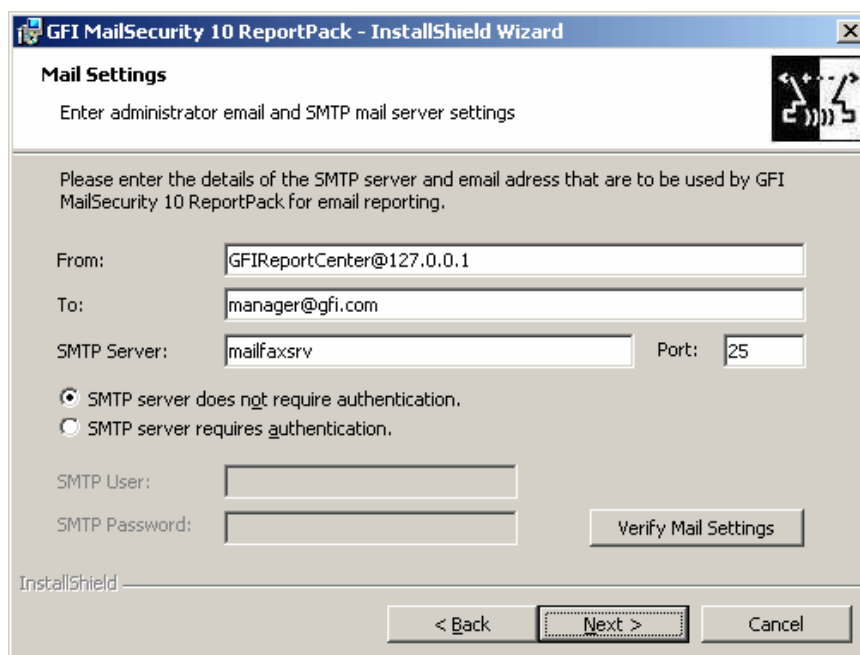
7. In the **Database Selection** page, you need to select the database you configured GFI MailSecurity to use for reporting purposes.

If you configured GFI MailSecurity to log reporting data into a Microsoft Access database, click **Use Microsoft Access** and then specify the full path in the **Database Path** box.

If on the other hand, you configured GFI MailSecurity to log reporting data into a Microsoft SQL Server database, click **Use Microsoft SQL Server** and then specify the server name or IP number of the machine hosting the Microsoft SQL Server in the **Database Server** box. In the **Database Name** box, specify the database containing the GFI MailSecurity reporting data. Select the authentication method you want to use to connect to the Microsoft SQL Server database. If you select **Server authentication** you need to specify a login name and password in the **Login ID** and **Password** boxes respectively.

**NOTE:** After the installation is complete, you can change the reporting database used by GFI ReportCenter at any time from the **Options** panel.

Click **Next** to continue.



Screenshot 6 - Email settings page

8. Specify the default email settings that you want GFI ReportCenter to use when sending reports by email. When you generate a report or while configuring a scheduled report, you can either use these default settings or else specify different settings for that specific report only. To check the email settings specified, you can click **Verify Mail Settings**. The installation wizard will send a test email to the address in the **To** box, using the SMTP server specified.

**NOTE:** After the installation is complete, you can change the email settings used by GFI ReportCenter at any time from the **Options** panel.

Click **Next** to continue.

9. Specify the product installation path or click **Next** to leave as default. The installation needs approximately 100 MB of free disk space.

10. The installation wizard is now ready to copy the required files and finalize the installation. To proceed click **Install**.

11. When all the files are copied, the installation wizard displays the finish page. Click **Finish** to close the installation wizard and complete the installation.

---

## Launching GFI MailSecurity 10.0 ReportPack for GFI ReportCenter

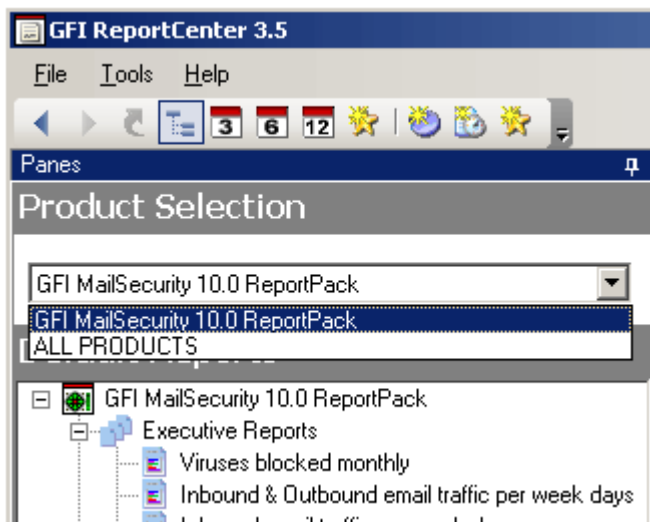
Following the installation, you can launch the GFI MailSecurity 10.0 ReportPack for GFI ReportCenter from **Start ▶ Programs ▶ GFI ReportCenter ▶ GFI MailSecurity ReportPack**.

**NOTE:** GFI ReportCenter will run with limited functionality upon expiry of the evaluation period. This will also occur if the license key you entered is not a valid GFI ReportCenter license key.

---

## Selecting a product

When more than one GFI product ReportPack is installed on the same machine, you can select the GFI product ReportPack you want to use from the **Product Selection** list.



Screenshot 7 – Product Selection list

For example, to run the reports provided in the GFI MailSecurity 10.0 ReportPack, click on the **Product Selection** list and select the GFI MailSecurity 10.0 ReportPack entry.

**NOTE:** Select the 'ALL PRODUCTS' option to display and navigate all the ReportPacks that are currently installed in GFI ReportCenter.