

Installation

System requirements

Install the GFI LANguard N.S.S. ReportPack on a computer that meets the following requirements:

- Windows 2000 (SP4) / XP (SP2) / 2003 operating system
- Internet Explorer 5.1 or higher
- .NET Framework version 1.1.

NOTE: The GFI LANguard N.S.S. ReportPack only allows you to generate reports for data contained in scan results databases which were created and maintained by GFI LANguard N.S.S.

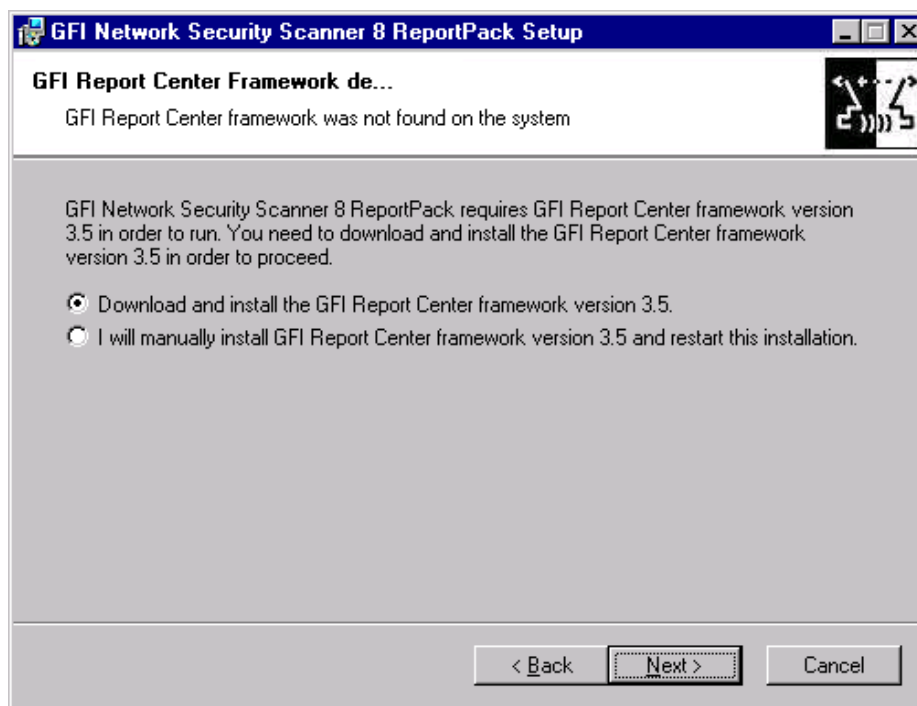
Installation procedure

The GFI LANguard N.S.S. ReportPack includes an installation wizard which will assist you through the installation process. During the installation process this wizard will:

- Verify that you are running the latest version of the GFI ReportCenter framework; if you are installing the framework for the first time or the currently installed framework version is outdated, the installation wizard will automatically download the latest one for you.
- Automatically install all the required components distributed including the GFI ReportCenter framework, the GFI LANguard N.S.S. default reports and the Report Scheduling service.

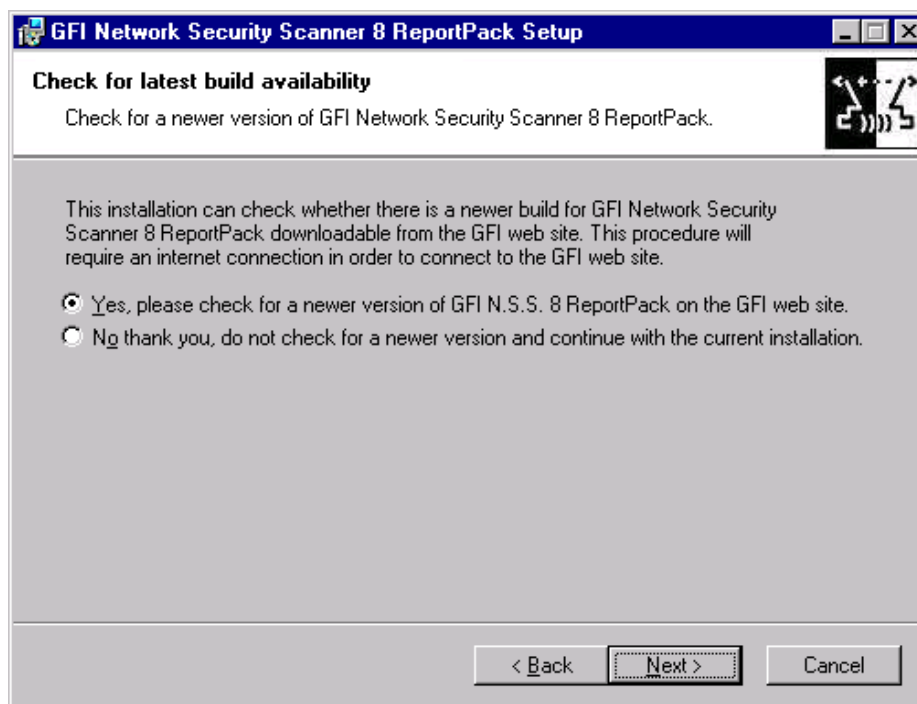
To start the installation:

1. Double-click on **languardnss7rp.exe**. As soon as the welcome dialog is displayed, click **Next** to start the installation.



Screenshot 2 - GFI ReportCenter framework detection dialog

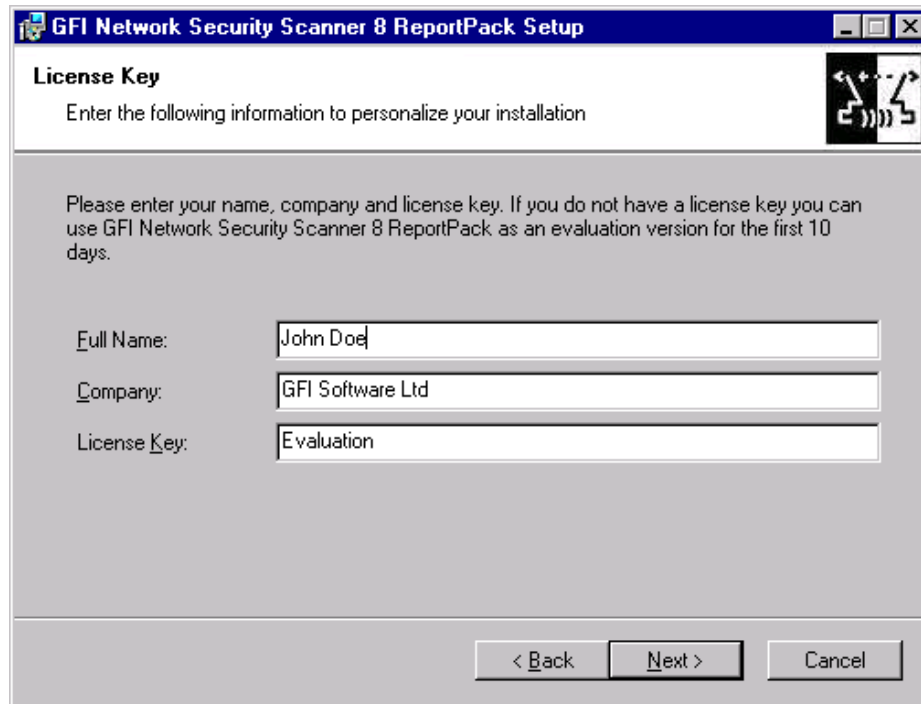
2. If the current version of your GFI ReportCenter framework is not compatible with the GFI LANguard N.S.S. ReportPack, you will be prompted to download and install an updated version. To automatically achieve this, leave the dialog options as default and click on the **Next** button.



Screenshot 3 - Check for latest build availability

3. Choose whether you want the installation wizard to search for a newer build of the GFI LANguard N.S.S. 8.0 ReportPack on the GFI website. Then, click on the **Next** button to proceed with the installation.

4. In the license dialog, read the licensing agreement carefully. Select the 'I accept the Licensing agreement' option and click on **Next** to continue.



License Key

Enter the following information to personalize your installation

Please enter your name, company and license key. If you do not have a license key you can use GFI Network Security Scanner 8 ReportPack as an evaluation version for the first 10 days.

Full Name:

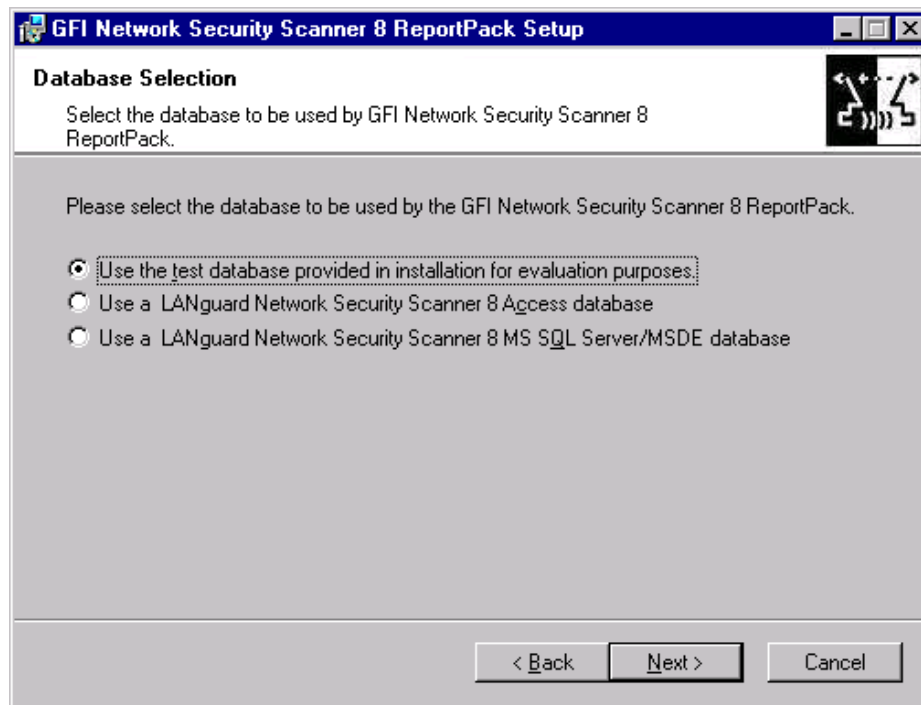
Company:

License Key:

< Back Next > Cancel

Screenshot 4 - Licensing details dialog

5. Specify the full user name, the company name and the license key. If you will be evaluating the product for 10 days, leave the evaluation key as default (i.e. "Evaluation"). Click on **Next** to continue.



Database Selection

Select the database to be used by GFI Network Security Scanner 8 ReportPack.

Please select the database to be used by the GFI Network Security Scanner 8 ReportPack.

Use the test database provided in installation for evaluation purposes.

Use a LANguard Network Security Scanner 8 Access database

Use a LANguard Network Security Scanner 8 MS SQL Server/MSDE database

< Back Next > Cancel

Screenshot 5 – SQL Server selection dialog

6. Specify which database backend is being used by your GFI LANguard N.S.S. installation.

NOTE 1: For evaluation purposes you can also use the sample database that is distributed with this installation.

NOTE 2: If a MS Access database is being used and you are not installing the GFI LANguard N.S.S. ReportPack on the same computer that is running GFI LANguard N.S.S., click Browse and specify the path to your MS Access database backend using UNC (e.g. \\LNSS Server\GFI\ScanResults.mdb).

GFI Network Security Scanner 8 ReportPack Setup

SQL Server selection

Please enter the requested information

Please specify an SQL server containing a valid LANguard Network Security Scanner 8 database, and the necessary logon information.

SQL server details:

Server:

Use Windows authentication.

Login using the following credentials (SQL Account):

User:

Password:

< Back Next > Cancel

Screenshot 6 - Database configuration dialog

7. If an MS SQL Server/MSDE database backend is being used, specify the SQL server details (name, authentication method and credentials). Click on **Next** to continue.

GFI Network Security Scanner 8 ReportPack Setup

Mail Settings

Enter administrator email and SMTP mail server settings

Please enter the details of the SMTP server and email address that are to be used by GFI Network Security Scanner 8 ReportPack for email reporting.

From:

To:

SMTP server: Port:

SMTP server does not require authentication.
 SMTP server requires authentication.

Verify Mail Settings

< Back Next > Cancel

8. Specify the default email settings that will be used for report distribution.
9. Specify the product installation path or click **Next** to leave as default. The installation will need approximately 100 MB of free disk space.
10. The installation wizard is now ready to copy the required files and finalize the installation. To proceed click on the **Next** button.

Launching the GFI LANguard N.S.S. reports for GFI ReportCenter

Following the installation, launch the GFI LANguard N.S.S. Reports for GFI ReportCenter from **Start ▶ Programs ▶ GFI ReportCenter ▶ LANguard Network Security Scanner 8 ReportPack**.

NOTE: GFI ReportCenter will run with limited functionality upon expiry of the evaluation period. This will also occur if the license key you entered is not a valid GFI ReportCenter license key.

Selecting a product

When more than one product ReportPack is installed, use the **Product Selection** drop down list to select the GFI product ReportPack to be used.



Screenshot 8 – Product Selection drop down list

For example, to run the reports provided in the GFI LANguard N.S.S. ReportPack:

1. Launch GFI ReportCenter from **Start ▶ Program Files ▶ GFI ReportCenter**.
2. Select 'GFI LANguard Network Security Scanner 8.0' from the **Product Selection** drop down list.

NOTE: Select the 'ALL PRODUCTS' option to display and navigate all the ReportPacks that are currently installed in GFI ReportCenter.