

Installation

System requirements

Install the GFI EventsManager ReportPack on a computer that meets the following requirements:

- Windows 2000 (SP4) / XP (SP2) / 2003 operating system
- Internet Explorer 5.1 or higher
- .NET Framework version 1.1.

NOTE: The GFI EventsManager ReportPack only allows you to generate reports for data contained in the SQL Server database backend of GFI EventsManager.

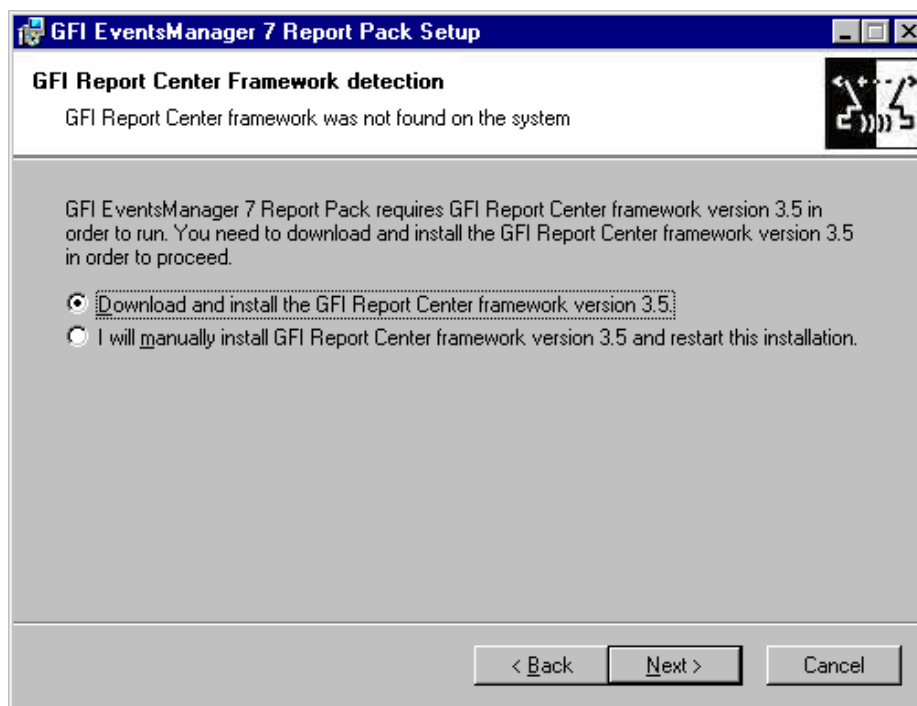
Installation procedure

The GFI EventsManager ReportPack includes an installation wizard which will assist you through the installation process. During the installation process this wizard will:

- Verify that you are running the latest version of the GFI ReportCenter framework; if you are installing the framework for the first time or the currently installed framework version is outdated, the installation wizard will automatically download the latest one for you.
- Automatically install all the required components distributed including the GFI ReportCenter framework, the GFI EventsManager default reports and the Report Scheduling service.

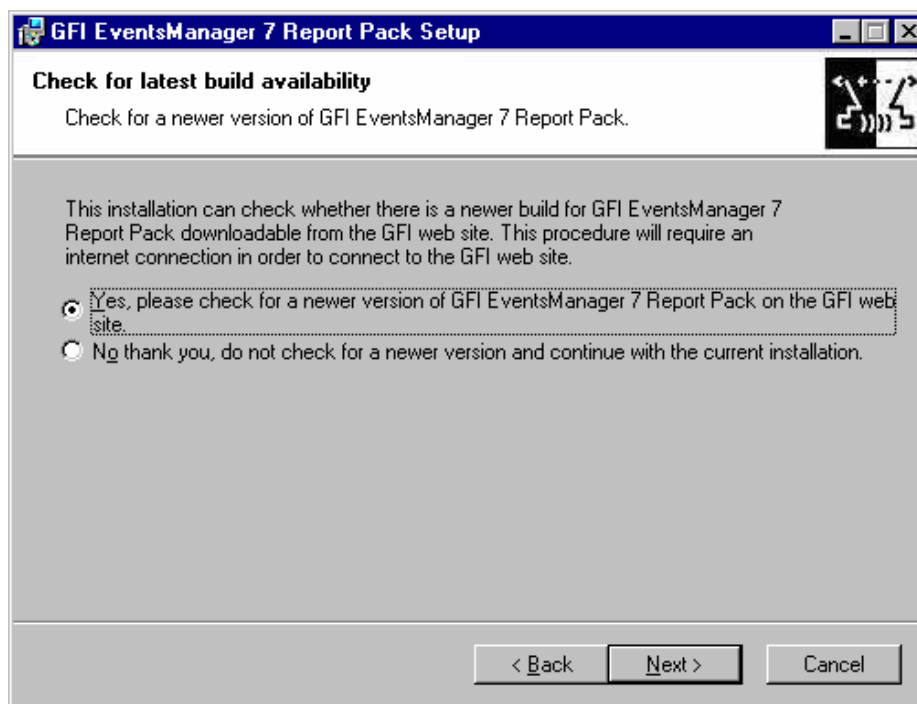
To start the installation:

1. Double-click on **eventsmanager7rp.exe**. As soon as the welcome dialog is displayed, click **Next** to start the installation.



Screenshot 2 - GFI ReportCenter framework detection dialog

2. If the current version of your GFI ReportCenter framework is not compatible with the GFI EventsManager ReportPack, you will be prompted to download and install an updated version. To automatically achieve this, leave the dialog options as default and click on the **Next** button.



Screenshot 3 - Check for latest build availability

3. Choose whether you want the installation wizard to search for a newer build of the GFI EventsManager 7.0 ReportPack on the GFI website. Then, click on the **Next** button to proceed with the installation.

4. In the license dialog, read the licensing agreement carefully. Select the 'I accept the Licensing agreement' option and click on **Next** to continue.

GFI EventsManager 7 Report Pack Setup

License Key

Enter the following information to personalize your installation

Please enter your name, company and license key. If you do not have a license key you can use GFI EventsManager 7 Report Pack as an evaluation version for the first 10 days.

Full Name: Jason Micallef

Company: GFI Software Ltd.

License Key: Evaluation

< Back Next > Cancel

Screenshot 4 - Licensing details dialog

5. Specify the full user name, the company name and the license key. If you will be evaluating the product for 10 days, leave the evaluation key as default (i.e. "Evaluation"). Click on **Next** to continue.

GFI EventsManager 7 Report Pack Setup

Database selection

Data source settings for GFI EventsManager 7 Report Pack

Specify the database source that will be used by the GFI EventsManager 7 Report Pack.

Use sample database

Use SQL Server database

Server and database selection

Server: SQLSERVER

Database: EventsManager

Authentication method

Use Windows authentication.

Login using the following credentials (SQL Account):

User: sa

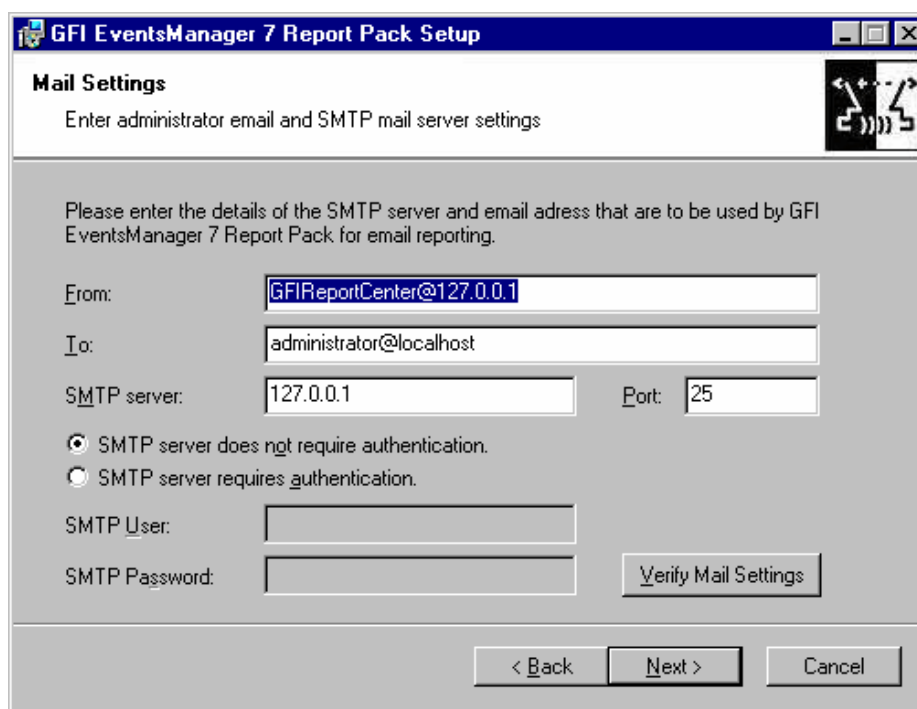
Password: *****

< Back Next > Cancel

Screenshot 5 – SQL Server selection dialog

6. Specify the details of the SQL Server which is hosting your GFI EventsManager database backend.

NOTE: For evaluation purposes you can also use the sample database that is distributed with this installation. When the GFI EventsManager ReportPack installation is complete, the sample database configuration guide is launched.



The screenshot shows a Windows-style dialog box titled "GFI EventsManager 7 Report Pack Setup". The main heading is "Mail Settings" with a sub-instruction: "Enter administrator email and SMTP mail server settings". Below this, a paragraph reads: "Please enter the details of the SMTP server and email address that are to be used by GFI EventsManager 7 Report Pack for email reporting." The form contains several input fields: "From:" with the value "GFIReportCenter@127.0.0.1"; "To:" with the value "administrator@localhost"; "SMTP server:" with the value "127.0.0.1"; and "Port:" with the value "25". There are two radio buttons for authentication: "SMTP server does not require authentication." (which is selected) and "SMTP server requires authentication." Below these are fields for "SMTP User:" and "SMTP Password:". A "Verify Mail Settings" button is located to the right of the password field. At the bottom of the dialog are three buttons: "< Back", "Next >", and "Cancel".

Screenshot 6 - Email configuration dialog

7. Specify the default email settings that will be used for report distribution.
8. Specify the product installation path or click **Next** to leave as default. The installation will need approximately 100 MB of free disk space.
9. The installation wizard is now ready to copy the required files and finalize the installation. To proceed click on the **Next** button.

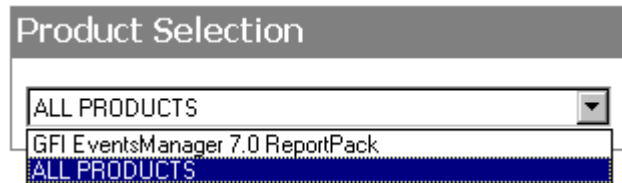
Launching the GFI EventsManager reports for GFI ReportCenter

Following the installation, launch the GFI EventsManager Reports for GFI ReportCenter from **Start ▶ Programs ▶ GFI ReportCenter ▶ EventsManager 7 ReportPack**.

NOTE: GFI ReportCenter will run with limited functionality upon expiry of the evaluation period. This will also occur if the license key you entered is not a valid GFI ReportCenter license key.

Selecting a product

When more than one product ReportPack is installed, use the **Product Selection** drop down list to select the GFI product ReportPack to be used.



Screenshot 7 – Product Selection drop down list

For example, to run the reports provided in the GFI EventsManager ReportPack:

1. Launch GFI ReportCenter from **Start ▶ Program Files ▶ GFI ReportCenter**.
2. Select 'GFI EventsManager 7.0' from the **Product Selection** drop down list.

NOTE: Select the 'ALL PRODUCTS' option to display and navigate all the ReportPacks that are currently installed in GFI ReportCenter.