
Upgrading from GFI MailSecurity 8 to GFI MailSecurity 9

Due to fundamental architectural changes between GFI MailSecurity 9 and GFI MailSecurity 8, it is not possible to install GFI MailSecurity 9 on top of an existing installation of GFI MailSecurity 8.

This section therefore shows you how to:

- Replace your current GFI MailSecurity 8 installation with GFI MailSecurity 9.
- Migrate the GFI MailSecurity 8 configuration settings to GFI MailSecurity 9's new configuration database format.

NOTE: If GFI MailSecurity 8 was installed in SMTP mode and GFI MailSecurity 9 is installed in Active Directory mode, you will not be able to migrate the settings due to user-based rules. This also applies if GFI MailSecurity 8 was installed in Active Directory mode and GFI MailSecurity 9 is installed in SMTP mode.

To upgrade from GFI MailSecurity 8 to GFI MailSecurity 9, follow these steps:

1. Uninstall GFI MailSecurity 8.
2. When the GFI MailSecurity 8 uninstallation completes, certain files will be left behind under the root folder where GFI MailSecurity 8 had been installed. One of these files is the `avapicfg.rdb` file located in the Data sub-folder.

NOTE: Do not delete this file since it contains the GFI MailSecurity 8 configuration settings. You will need this file to migrate the settings from GFI MailSecurity 8 to GFI MailSecurity 9.

3. Install GFI MailSecurity 9 as shown in the 'Install GFI MailSecurity' section of this chapter.

NOTE: To install GFI MailSecurity 9, you need to have the following installed on the machine:

- Microsoft .Net framework 1.1
- MSMQ – Microsoft Messaging Queuing Service.
- Internet Information Services (IIS) – SMTP service and World Wide Web service.

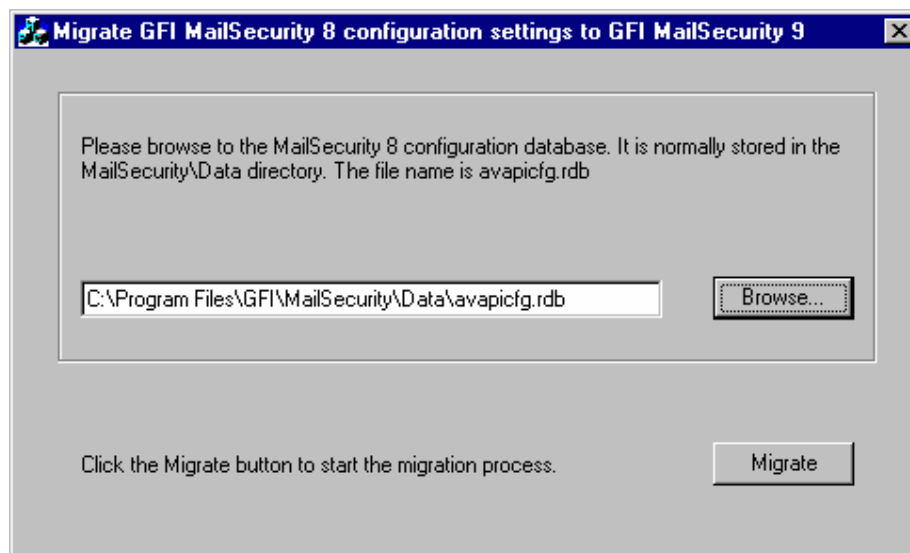
NOTE: Do not install GFI MailSecurity 9 to the same path where GFI MailSecurity 8 was installed, so as to prevent files such as `avapicfg.rdb` from being overwritten.

4. After the installation of GFI MailSecurity 9 is complete, you need to stop all GFI-related services along with the IIS Admin service, from the Services control applet. After that, you can run the GFI MailSecurity 8 settings migration tool.

NOTE: You must stop the following services before going on to the next step:

- GFI Content Security Attendant Service
- GFI Content Security Auto-Updater Service
- GFI MailSecurity Attendant Service
- GFI MailSecurity Scan Engine
- IIS Admin

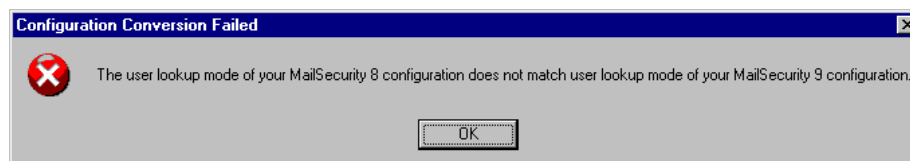
- Simple Mail Transfer Protocol (SMTP).
5. To migrate the GFI MailSecurity 8 settings to the GFI MailSecurity 9 configuration database, you need to run the msec8upg.exe tool found in the GFI MailSecurity 9 folder, for example:
- c:\program files\GFI\ContentSecurity\MailSecurity.




Screenshot 13 – GFI MailSecurity 8 configuration settings migration tool

6. Double-click the msec8upg.exe file.
7. When the tool loads, click on the **Browse** button. Select the avapicfg.rdb file from the data sub-folder under the GFI MailSecurity 8 root folder.
8. Click the **Migrate** button.

NOTE: If you click the migrate button and the user lookup mode of GFI MailSecurity 8 and GFI MailSecurity 9 do not match (for example GFI MailSecurity 8 was installed in SMTP mode and GFI MailSecurity 9 is installed in Active Directory mode or vice versa), an error like the one shown below will be displayed and you will not be able to migrate the settings due to user-based rules.



Screenshot 14 – User lookup mode mismatch.

9. When the migration process completes, a **Configuration was successfully converted** information dialog will be displayed. Click the **OK** button to close the information dialog and click on the close button  to close the migration tool.



Screenshot 15 – Settings migrated successfully

10. You now need to start all the services that you stopped in step 4 above; this must be done from the Services control applet.

11. Use the GFI MailSecurity 9 configuration to check that the GFI MailSecurity 8 settings were migrated correctly.