
GFI FAXmaker for Exchange/SMTP 12

GFI FAXmaker for Lotus Domino

By GFI Software



<http://www.gfi.com>
Email: info@gfi.com

Information in this document is subject to change without notice. Companies, names, and data used in examples herein are fictitious unless otherwise noted. No part of this document may be reproduced or transmitted in any form or by any means, electronic or mechanical, for any purpose, without the express written permission of GFI Software.

GFI FAXmaker is copyright of GFI SOFTWARE Ltd. © 1992-2007 GFI Software. All rights reserved.

GFI FAXmaker is a registered trademark and GFI Software Ltd. and the GFI logo are trademarks of GFI Software Ltd. in the Europe, the United States and other countries.

Last updated: May 23, 2007

Contents

System Requirements	1
Software requirements	1
Hardware requirements	2
Features update/ incompatibilities	3
Installation guide	4
Installation notes	4
Create Lotus Domino mailbox for GFI FAXmaker polling	6
Configuring Lotus Domino for GFI FAXmaker features	7
Registry Configuring	10
Other Configuring	11

System Requirements

Software requirements

- A Windows 2000 or 2003 server machine
- A professional fax device: A Brooktrout TR 114, TR 1034 or Trufax fax board, an EICON DIVA PRO/SERVER fax card or an AVM active fax card. You can use class 2 or 2.0 fax modems using either the Microsoft or the GFI fax modem drivers, although we strongly recommend using one of the fax devices listed above. For a complete list go to <http://kbase.gfi.com/showarticle.asp?id=KBID001220>
- When installing the GFI FAXmaker, the IIS SMTP service will need to be installed. The IIS SMTP service is included in every Windows distribution, including Windows professional. To verify the Installation of the SMTP Service: In Control Panel, open Add/Remove Programs, click Add/Remove Windows Components. Click the Internet Information Services (IIS) component, click Details, and then verify that the SMTP Service check box is selected. If it is not selected, click to select it, click OK, and then follow the installation directions that are displayed.
- If using Windows 2000, ensure you have Service Pack 3 or later installed.
- Internet Information Services (IIS) (32bit) – SMTP service and World Wide Web service
- **IMPORTANT:** Disable Anti Virus software from scanning the GFI FAXmaker & other relevant directories! AV products are known to both interfere with normal operation as well as slow down any software which requires file access.
- **IMPORTANT:** Make sure that backup software is not backing up any of the GFI FAXmaker directories at any point.

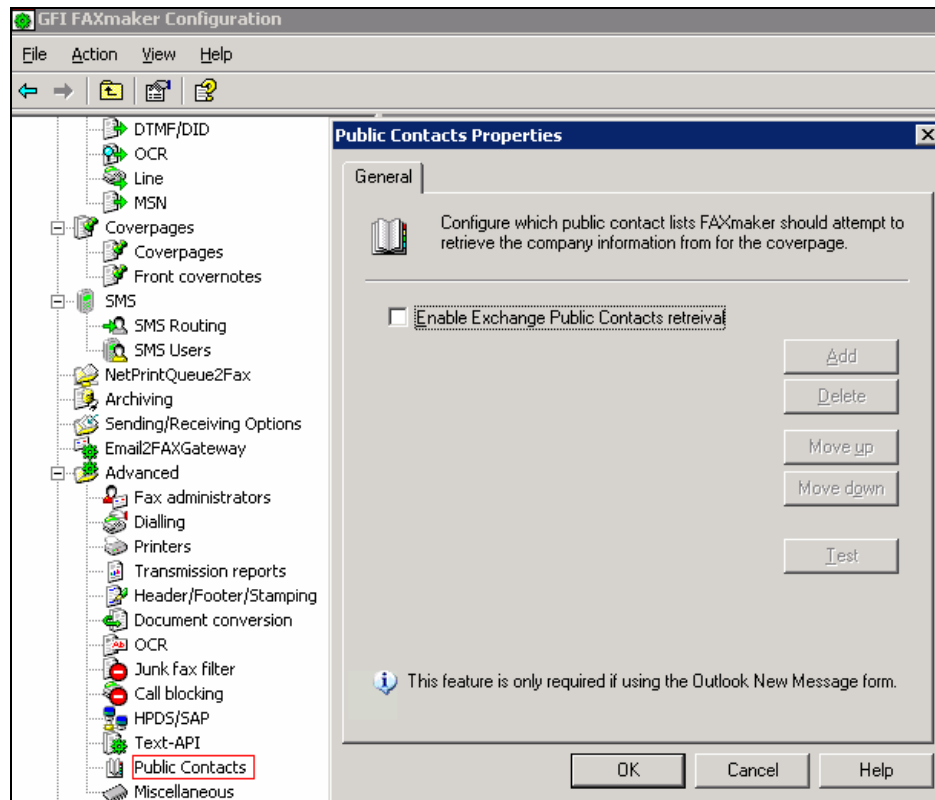
Hardware requirements

- Pentium 4 (or equivalent) - 2 GHz
- 512MB RAM
- 1.5 GB of physical disk space

Features Update/Incompatibility

Public Contacts will not be functional

In the Advanced section, the function of Public Contacts will not work for Lotus Domino since it's a Microsoft Exchange feature. This option must be disabled, as shown in the image below.



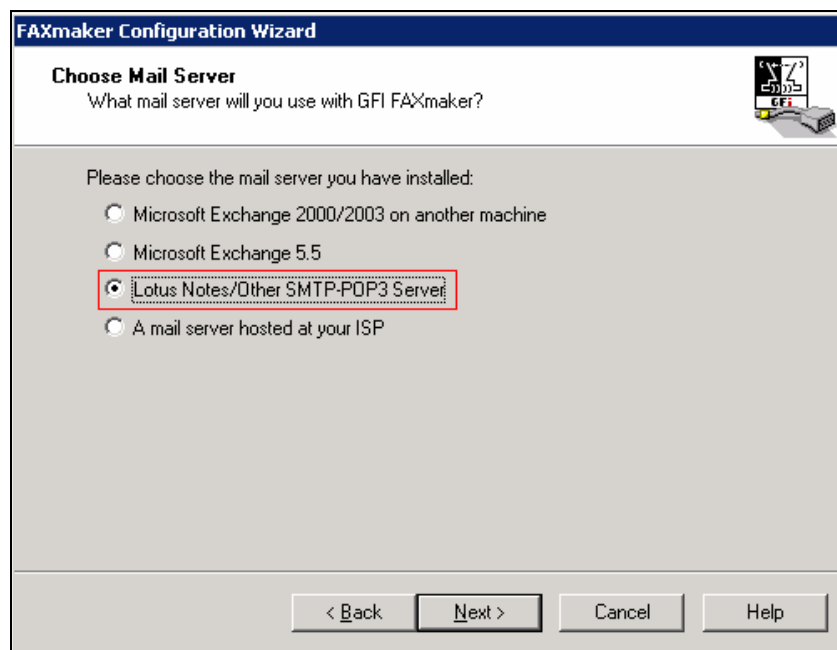
Installation guide

Installation notes

GFI FAXmaker must be installed on a separate machine from Lotus Domino.

Installation of GFI FAXmaker

When GFI FAXmaker is installed, the configuration wizard will ask the user to choose the type of mail server. The 'Lotus Notes/Other SMTP-POP3 Server' must be chosen.



In the next screen the user is asked for the Mail Server settings for the GFI FAXmaker mailbox to be used for faxes traffic. Refer to the section 'Create Lotus Domino mailbox for GFI FAXmaker polling' in this document.

FAXmaker Configuration Wizard

Set-up Mail Server
Specify mail server settings

Please specify the name or the IP address of the mail server and the mailbox name and password from where faxes will be downloaded.

Mail server name or IP address:

Use SSL
 Use SMTP Authentication

Account and password:

Secure Password Authentication

Fax mailbox account name and password:

< Back Next > Cancel Help

After adding the hardware for communications, the next screen asks the user to enter the administrators and users to use GFI FAXmaker. Refer to section 'Configuring Active Directory for user's email setup'. These can be changed later on in the configuration.

FAXmaker Configuration Wizard

Set-up Administrators And Users
You must set-up the default FAXmaker administrators and FAXmaker users for the fax server to work.

Name	Email
Administrator	administrator@dominotest.local
user	user@dominotest.local

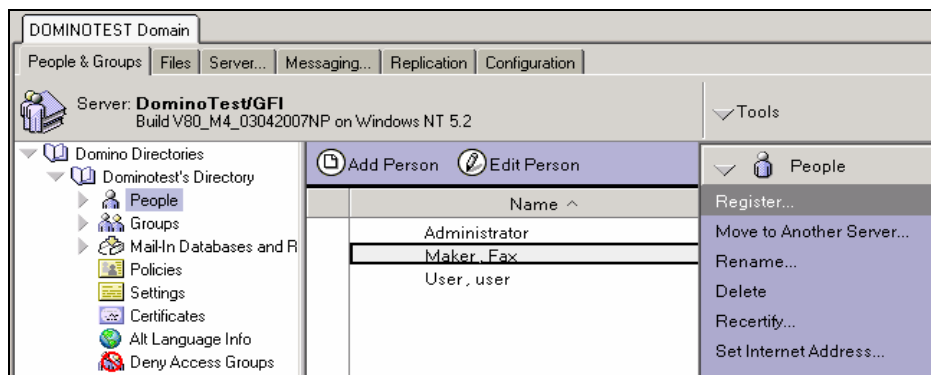
Add users

< Back Next > Cancel Help

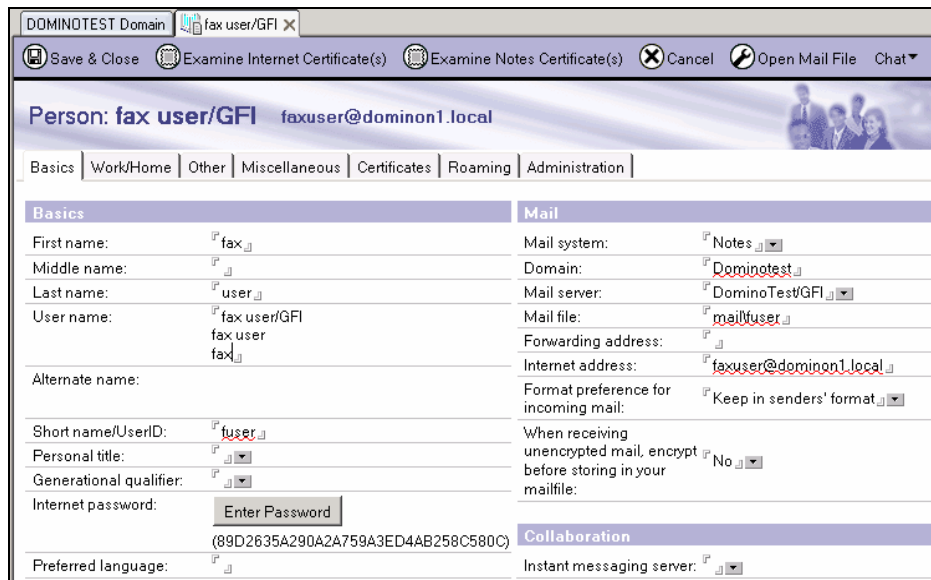
Create Lotus Domino mailbox for GFI FAXmaker polling

Configuration

Open the Lotus Domino Administrator, click on the People & Groups tab, select People and click on Register. This user will be used for fax polling by GFI FAXmaker. An internet address is not needed for the purpose of the user.



Once the person is registered, the username needs to be changed so that GFI FAXmaker will be able to log in. After the edit is complete, press on the Save & Close button.



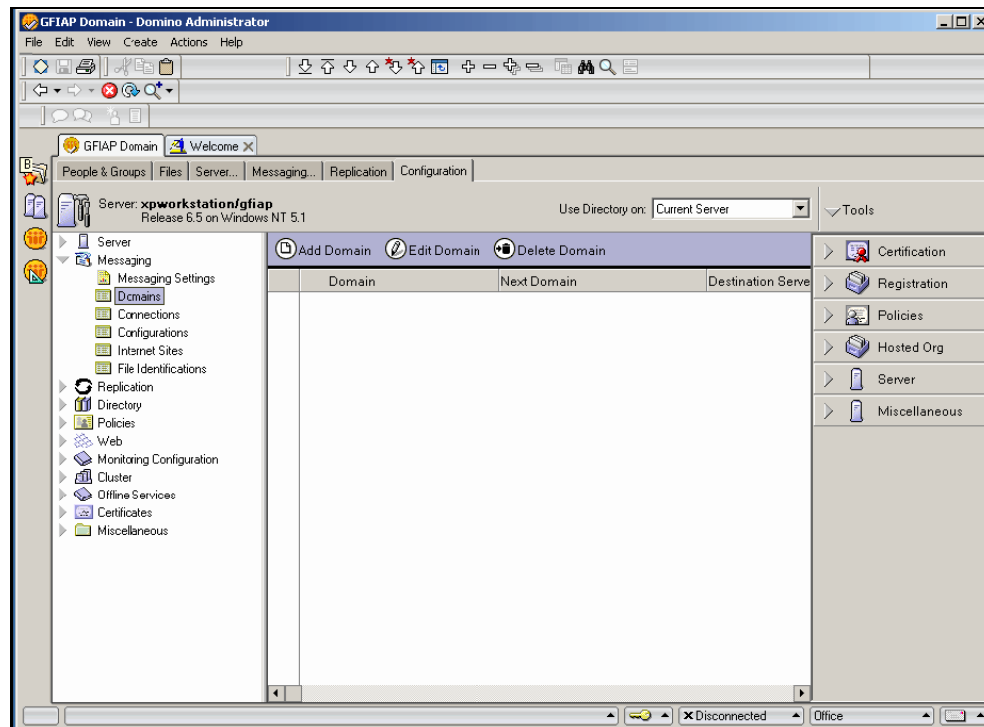
Edit the user configuration document. Also make sure that the internet password is set.

Configuring Lotus Domino for GFI FAXmaker features

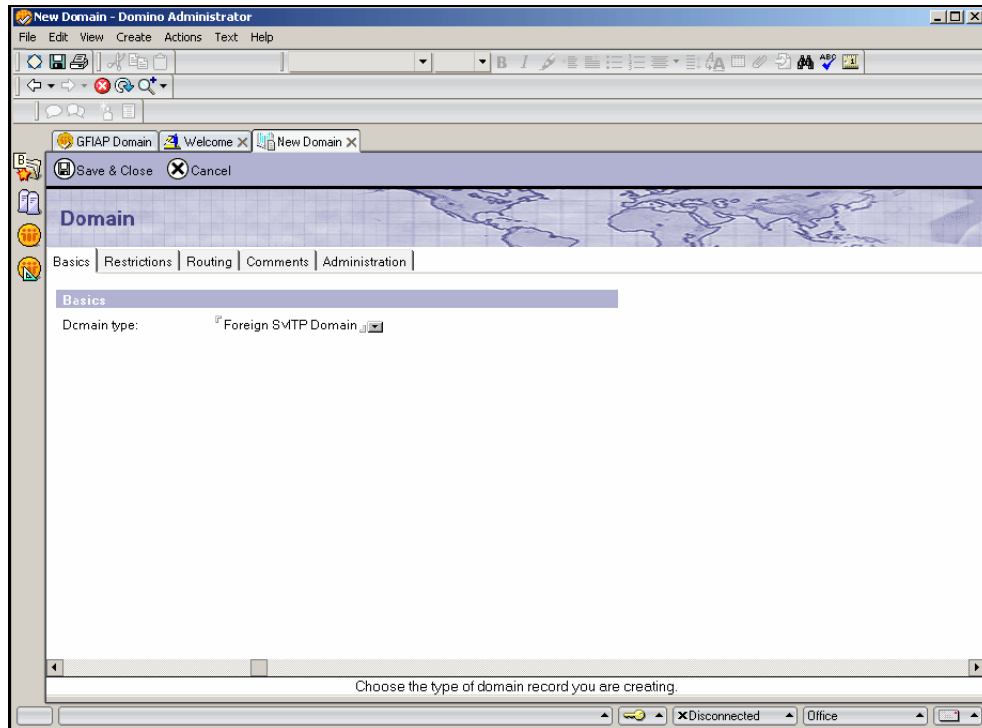
Configuration

In GFI FAXmaker to send a fax, the user can send a fax by sending a memo/email to “123456@FAXmaker” or “123456@smsmaker” in case of an SMS. To configure this, the administrator needs to add a new external domain to Lotus Domino.

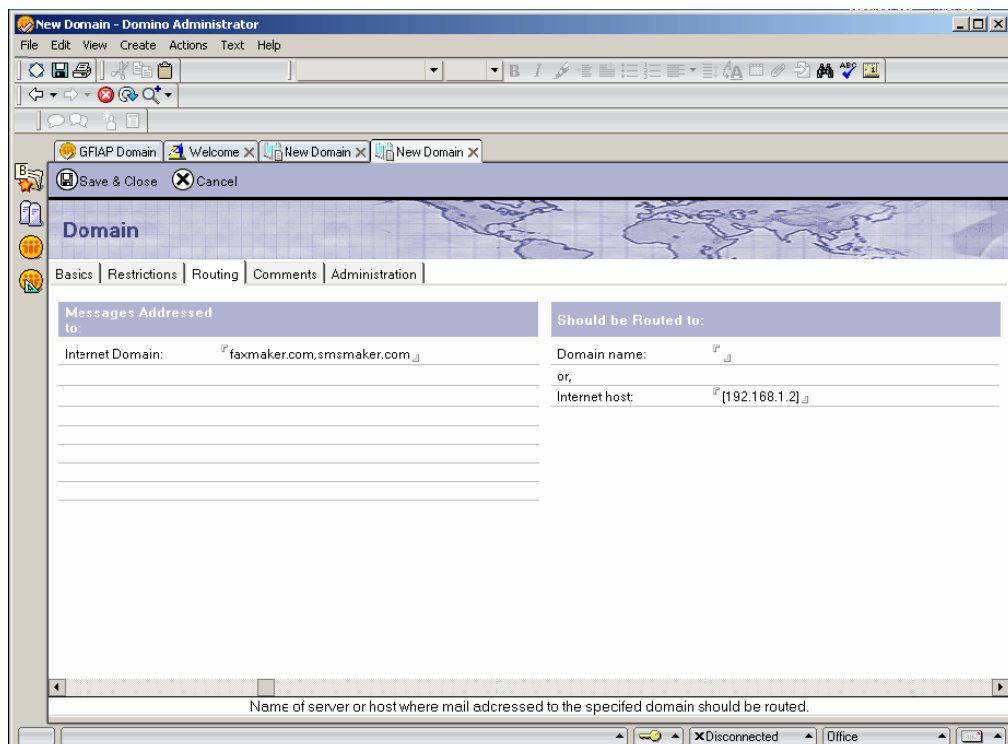
Open the Lotus Domino Administrator and open the configuration tab. Select the Domains from the left side and press on the Add Domain button.



Select the basic tab and make sure you have the domain type set as Foreign SMTP Domain.



Select the routing path and in the internet domain enter FAXmaker.com and smsmaker.com separated with a comma. In the internet host, enter the machine IP Address where GFI FAXmaker is installed.



Save and close the document, and restart the Lotus Domino router from the Lotus Domino console as below:

```
Tell router stop  
Tell router start
```

Registry Configuration

From the machine where GFI FAXmaker is installed, registry needs to be changed to accept faxes which are sent in "Number@FAXmaker.com".

Open Registry Editor (Start -> Run -> Regedit).

Browse to:

[HKEY_LOCAL_MACHINE\SOFTWARE\GFI Fax & Voice\FAXmaker\Config\E2FG]

Under [HKEY_LOCAL_MACHINE\SOFTWARE\GFI Fax & Voice\FAXmaker\Config\E2FG] locate the DWORD value:

aliasatsserver

Ensure that the Value data for 'aliasatsserver' is set to 1.

Example:

aliasatsserver = 1

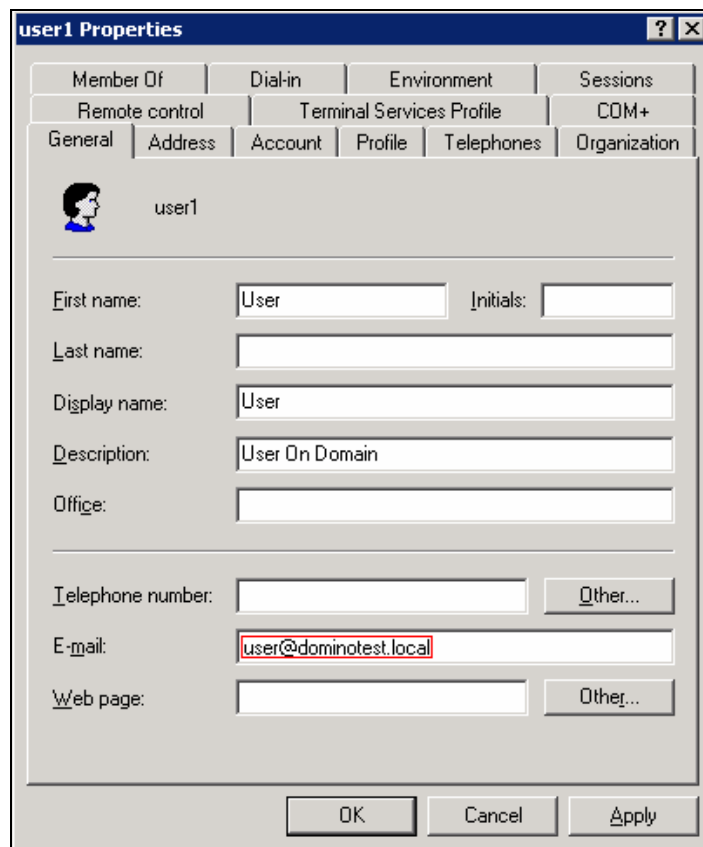
Restart the GFI FAXmaker Message Transfer Agent Service.

Other configuration

Active Directory

This configuration is need if GFI FAXmaker is installed on a machine having Active Directory or being joined with a domain. For each user, an internet email address must be specified to ensure the correct authorization of the services.

From the Active Directory select the user which will be using FAXmaker or the users which are mail-enabled and edit the personal information as shown below.



The screenshot shows the 'user1 Properties' dialog box with the 'General' tab selected. The 'E-mail' field is highlighted with a red box, containing the text 'user@dominotest.local'. Other fields include 'First name: User', 'Initials:', 'Last name:', 'Display name: User', 'Description: User On Domain', 'Office:', 'Telephone number:', and 'Web page:'. The dialog box has 'OK', 'Cancel', and 'Apply' buttons at the bottom.

This must be done for every user in the Lotus Domino/Mail-Enabled user.

Special Note: This must be done before starting using GFI FAXmaker.